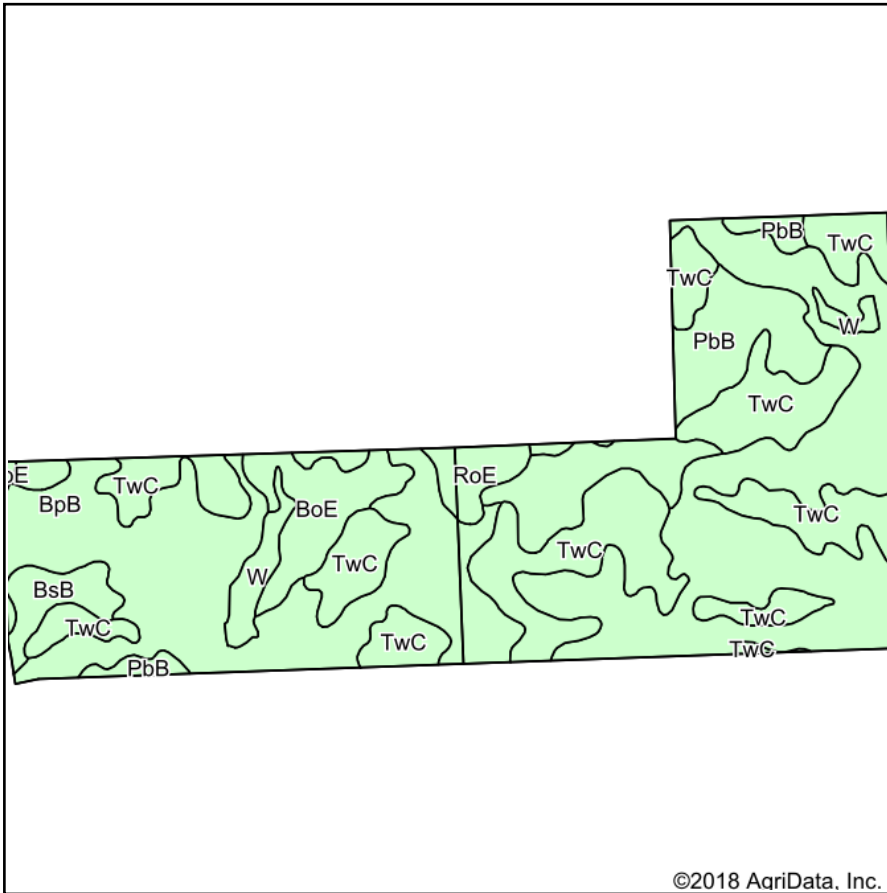
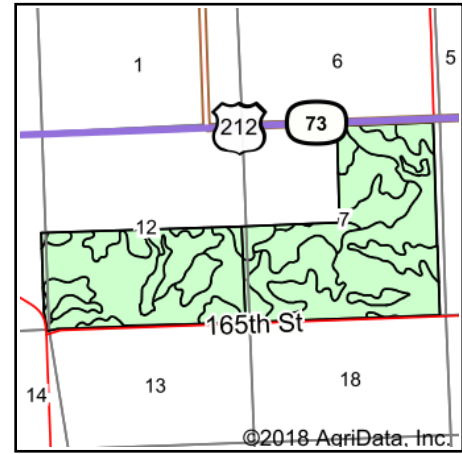


Soils Map



Soils data provided by USDA and NRCS.



State: **South Dakota**
 County: **Meade**
 Location: **12-12N-16E**
 Township: **North Meade**
 Acres: **777.45**
 Date: **4/17/2018**



Maps Provided By:



Area Symbol: SD601, Soil Area Version: 17

Code	Soil Description	Acres	Percent of field	Non-Irr Class *c	Irr Class *c	Range Production (lbs/acre/yr)	Productivity Index	NCCPI Overall	
BpB	Bullock-Parchin fine sandy loams, 0 to 4 percent slopes	385.36	49.6%		VI _s		1236	18	
TwC	Twilight-Marmarth-Parchin fine sandy loams, 3 to 9 percent slopes	215.54	27.7%		IV _e		1990	38	
PbB	Parchin-Bullock fine sandy loams, 2 to 6 percent slopes	87.96	11.3%		IV _s		1435	24	
BoE	Bullock-Lardell-Blackhall fine sandy loams, 2 to 40 percent slopes	37.70	4.8%		VII _s		1515	7	
BsB	Bullock-Slickspots complex, 0 to 4 percent slopes	18.27	2.3%		VI _s		852	12	
W	Water	17.05	2.2%				0	0	
RoE	Rock outcrop-Cabbart-Bullock complex, 15 to 40 percent slopes	15.57	2.0%		VIII _e		615	4	
Weighted Average							1432.5	22.9	14.1

*c: Using Capabilities Class Dominant Condition Aggregation Method

Soils data provided by USDA and NRCS.